



Apartment 3, Yorke House The Chimes, Bearsted, Maidstone, ME14 4RE
Price £325,000

**** NO FORWARD CHAIN ****

A luxurious first floor apartment situated on a small residential development off Ware Street. The property was constructed 15 years ago with a high specification, which includes underfloor heating, superb fully fitted kitchen, luxury bathroom and shower room en-suite, double glazed windows and tasteful decor throughout. Benefits include undercroft parking leading to a garage with electric roller shutter door. The apartments are served by a lift and have use of the communal gardens to the rear.

The picturesque village centre of Bearsted is within easy walking distance, where there is a delightful Green, several shops, inns, restaurants, parish church, leisure facilities and London line station. Maidstone, the county town of Kent, is approximately 3 miles distance.



ON THE GROUND FLOOR

Communal Entrance Hall

Entrance door with entry phone system. Staircase and lift to first floor.

ON THE FIRST FLOOR

Entrance Hall

Video intercom system. Storage cupboard housing consumer unit. Underfloor heating. Carpet.

Lounge/Dining Room

Double glazed window to rear. Double glazed patio doors to balcony over-looking communal garden to rear. Cupboard housing newly installed boiler and hot water tank. Underfloor heating. Carpet.

Kitchen

Fully fitted kitchen in gloss white finish. Integrated fridge freezer, dishwasher and washing machine. Built-in microwave, oven and electric hob with extractor over. Granite worktops with sink cut-out. Tiled floor with underfloor heating. Inset spot lighting.

Principal Bedroom

Double glazed window to front. Built-in wardrobes. Underfloor heating. Carpet. Door to en-suite.

En-suite Shower Room

Large built-in shower unit with glass doors. Low level WC. Pedestal wash hand basin with mixer tap. Tiled walls. Tiled floor with underfloor heating. Heated towel rail. Extractor fan. Inset spot lighting.

Bedroom Two

Double doors to Juliet balcony. Underfloor heating. Carpet.

Bathroom

Panelled bath with mixer tap and shower attachment over. Low level WC. Built-in vanity unit with inset basin and mixer tap. Heated towel rail. Tiled walls. Tiled floor with underfloor heating. Extractor fan. Inset spot lighting.

EXTERNALLY

Carport

Space for one vehicle.

Garage

Electric roller shutter door to front. Double glazed door to communal garden. Power and light.

Communal Gardens

Situated to the rear of the property.

OTHER INFORMATION

Leasehold Information

Lease Term: 125 years
Years Remaining: 110 years approx
Service charge and ground rent: Currently approx £2,100 per annum

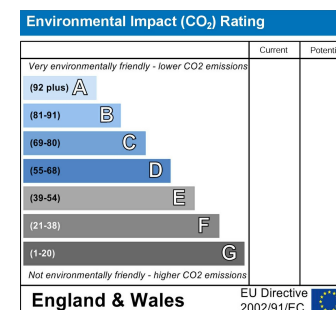
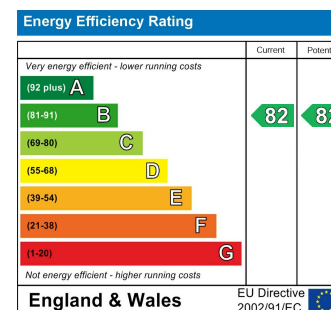
VIEWING

Strictly by arrangement with the Agent's Bearsted

Office, 132 Ashford Road, Bearsted, Maidstone, Kent ME14 4LX. Tel: 01622 739574.

DIRECTIONS

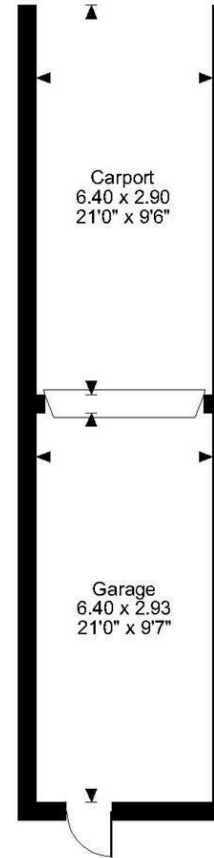
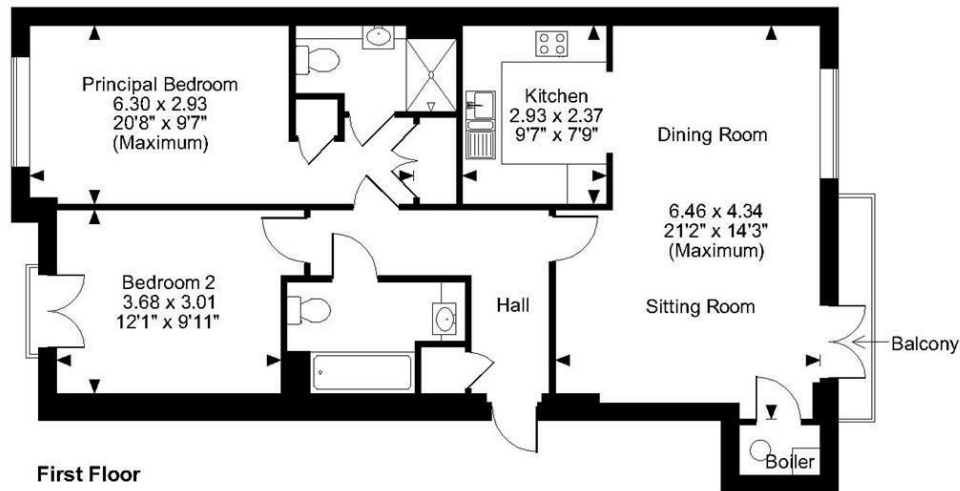
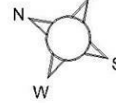
From the Agent's Bearsted office turn right into the Ashford Road and immediately left into Yeoman Lane. Proceed to the Village Green and turn left into Ware Street. Continue past the entrance to Bearsted Golf Club, where The Chimes will be found on the left hand side just before the railway bridge.



Page & Wells limited for themselves and for the vendors of this property whose agents they are give notice that: 1. These particulars do not constitute any part of, an offer or a contract. 2. All statements contained in these particulars as to this property are made without responsibility on the part of Page & Wells Limited or the Vendor. 3. None of the statements contained in these particulars as to the property is to be relied on as statements or representations of fact. 4. Any intending purchaser must satisfy himself by inspection or otherwise as to the correctness of each of the statements contained in these particulars. 5. The vendor does not make or give, and neither Page & Wells Limited nor any person in their employment has any authority to make or give any representation whatsoever in relation to this property. These particulars are supplied on the understanding that all negotiations are carried out throughout Page & Wells Limited. Properties with a reference prefixes EAA are those which Page & Wells Limited disclose an interest in accordance with the provisions of the Estates Agents Act 1979



The Chimes, Maidstone
Approximate Gross Internal Area
Main House = 853 Sq Ft/79 Sq M
Garage & Carport = 409 Sq Ft/38 Sq M
Balcony external area = 22 Sq Ft/2 Sq M



FOR ILLUSTRATIVE PURPOSES ONLY - NOT TO SCALE

The position & size of doors, windows, appliances and other features are approximate only.
 © ehouse. Unauthorised reproduction prohibited. Drawing ref. dig/8491996/SS